

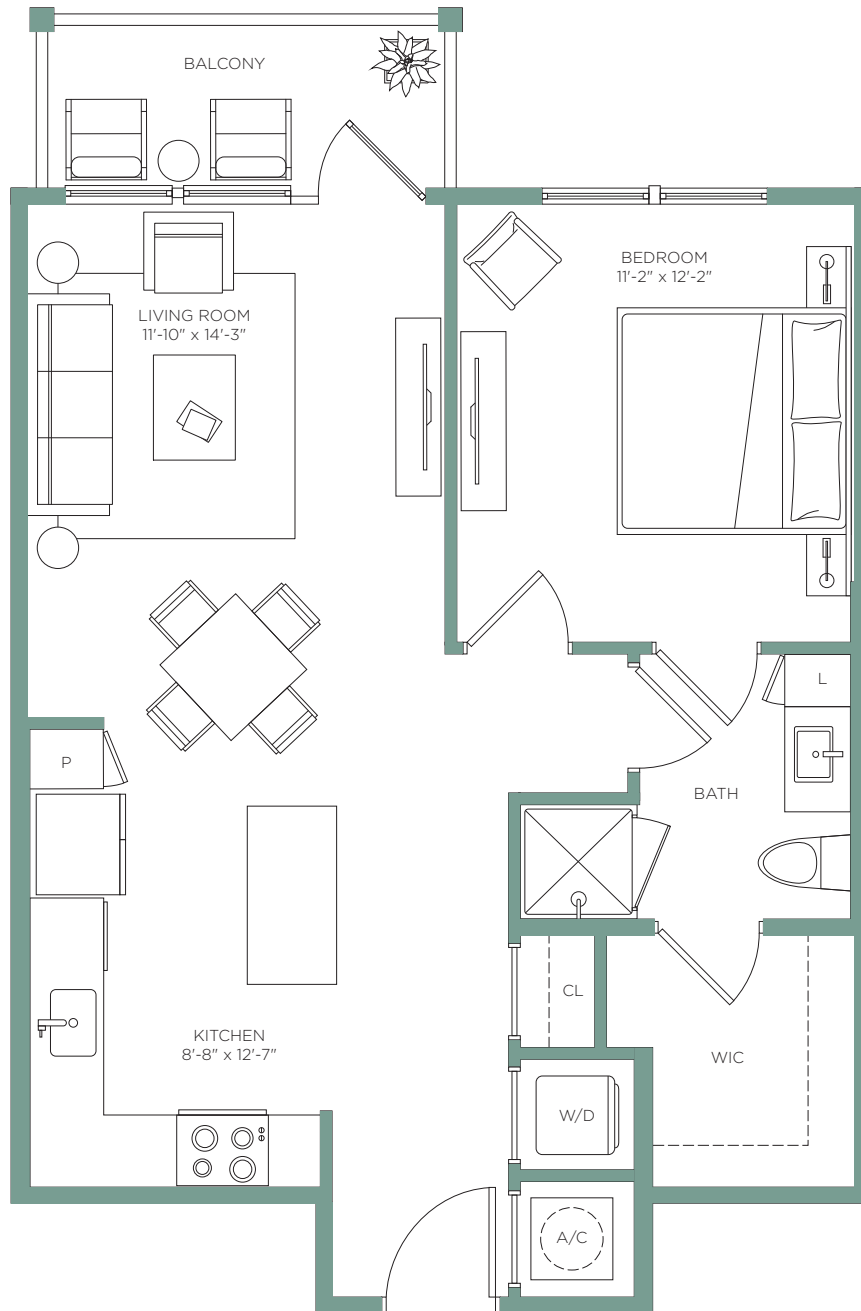
**A1**

1 BED / 1 BATH

**T O W N**  
K E N N E S A W

INTERIOR 723 sf  
BALCONY 55 sf

TOTAL 778 sf



**LEASING OFFICE** - 1545 N Whitmarsh Rd, Kennesaw, GA 30152  
Call **770-230-1438** or visit **TownKennesawApts.com**

The developer is RD Town Kennesaw, LLC, which has a license to use the name and trademarks of The Related Group by license. The renderings, including floor plans, are intended to illustrate unit options and layouts in general and are not a representations of unit sizes and dimensions specifically.



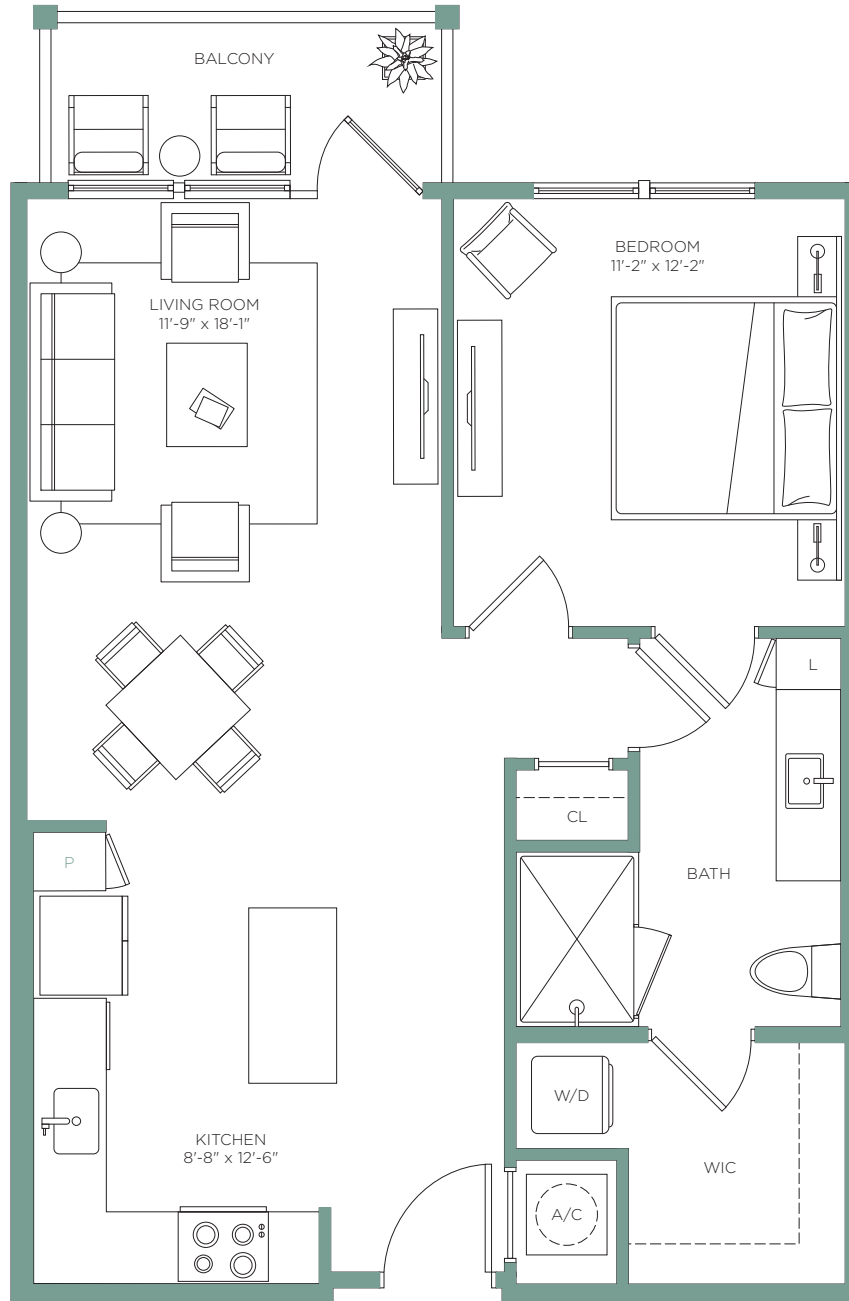
**A2**

1 BED / 1 BATH

**T O W N**  
K E N N E S A W

INTERIOR 768 sf  
BALCONY 55 sf

TOTAL 823 sf



**LEASING OFFICE** - 1545 N Whitmarsh Rd, Kennesaw, GA 30152  
Call **770-230-1438** or visit **TownKennesawApts.com**

The developer is RD Town Kennesaw, LLC, which has a license to use the name and trademarks of The Related Group by license. The renderings, including floor plans, are intended to illustrate unit options and layouts in general and are not a representations of unit sizes and dimensions specifically.



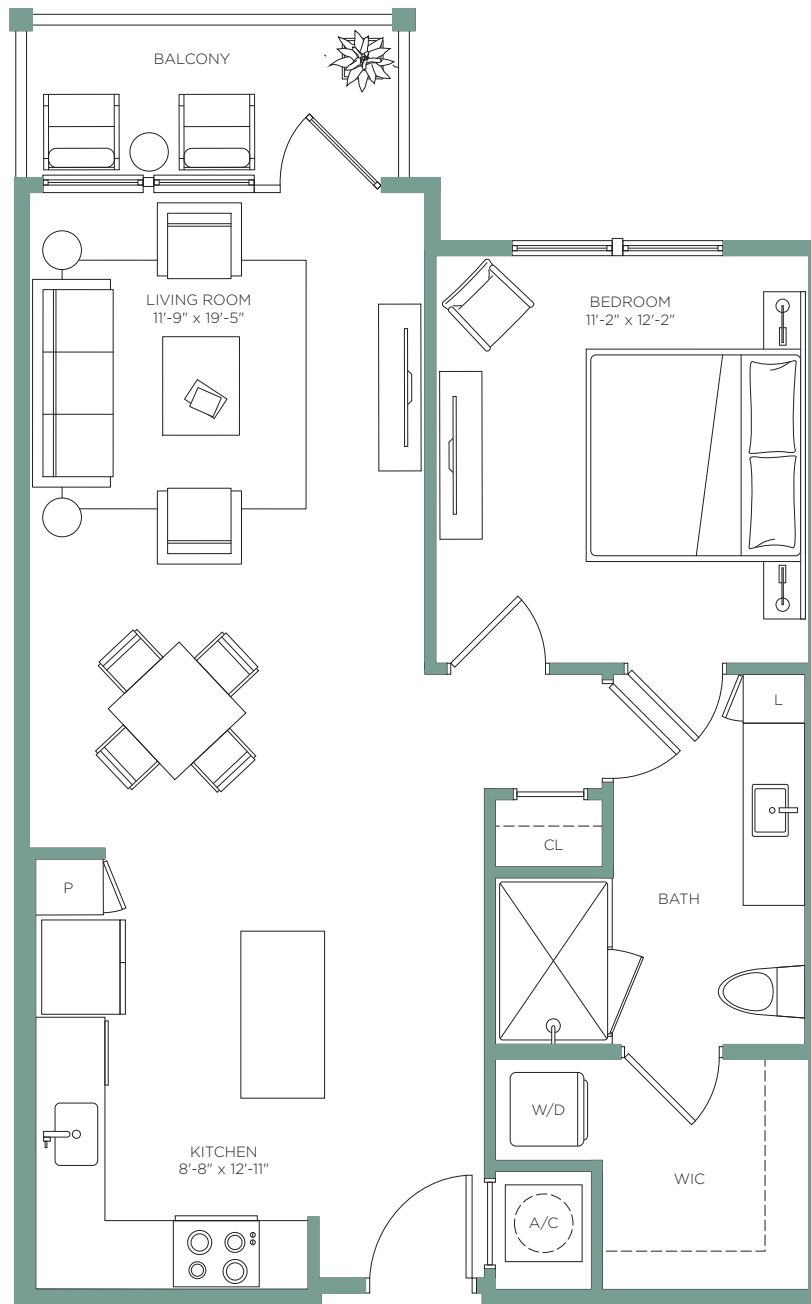
**A3**

1 BED / 1 BATH

**T O W N**  
K E N N E S A W

INTERIOR 792 sf  
BALCONY 55 sf

TOTAL 847 sf



**LEASING OFFICE** - 1545 N Whitmarsh Rd, Kennesaw, GA 30152  
Call **770-230-1438** or visit **TownKennesawApts.com**

The developer is RD Town Kennesaw, LLC, which has a license to use the name and trademarks of The Related Group by license. The renderings, including floor plans, are intended to illustrate unit options and layouts in general and are not a representations of unit sizes and dimensions specifically.



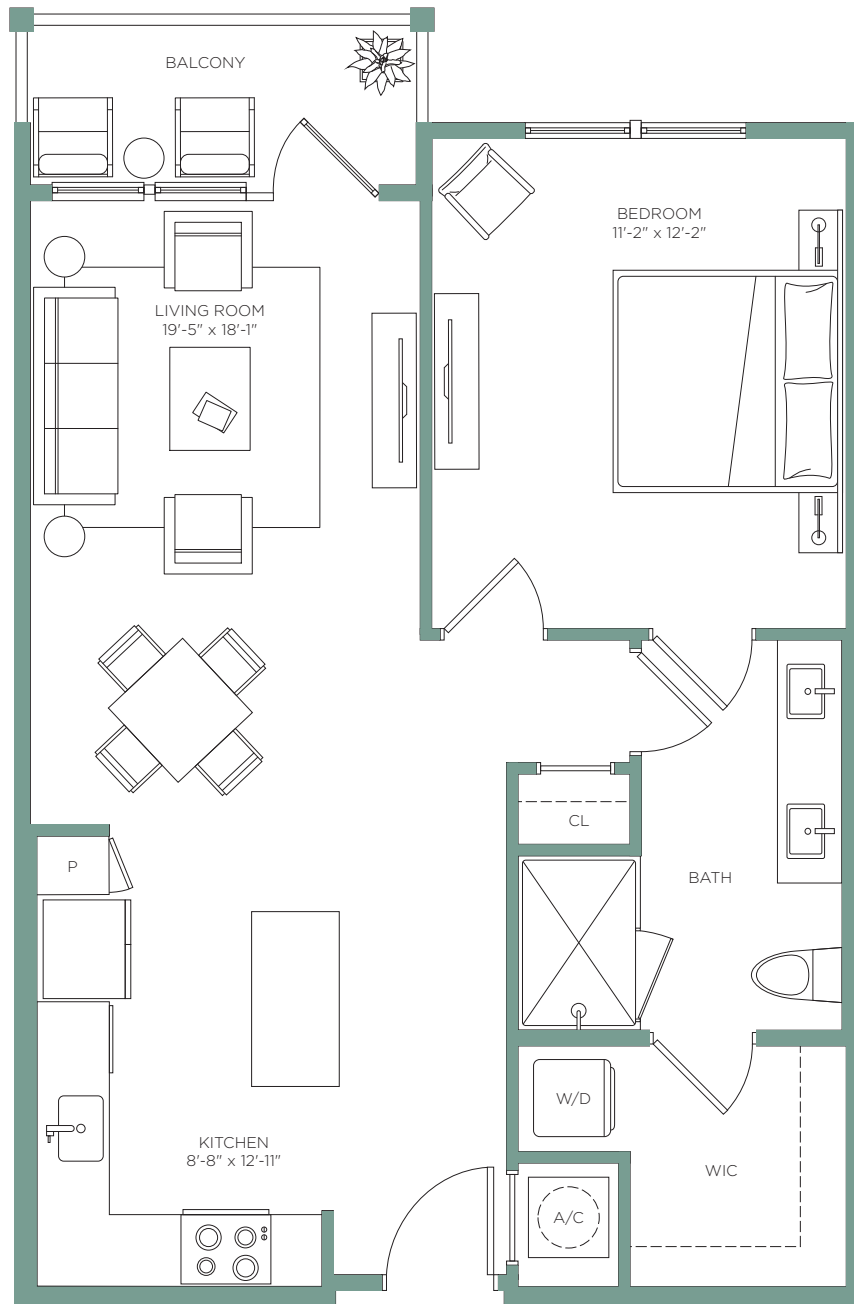
A4

1 BED / 1 BATH

T O W N  
K E N N E S A W

INTERIOR 792 sf  
BALCONY 55 sf

TOTAL 847 sf



LEASING OFFICE - 1545 N Whitmarsh Rd, Kennesaw, GA 30152  
Call **770-230-1438** or visit **TownKennesawApts.com**

The developer is RD Town Kennesaw, LLC, which has a license to use the name and trademarks of The Related Group by license. The renderings, including floor plans, are intended to illustrate unit options and layouts in general and are not a representations of unit sizes and dimensions specifically.



**A5**

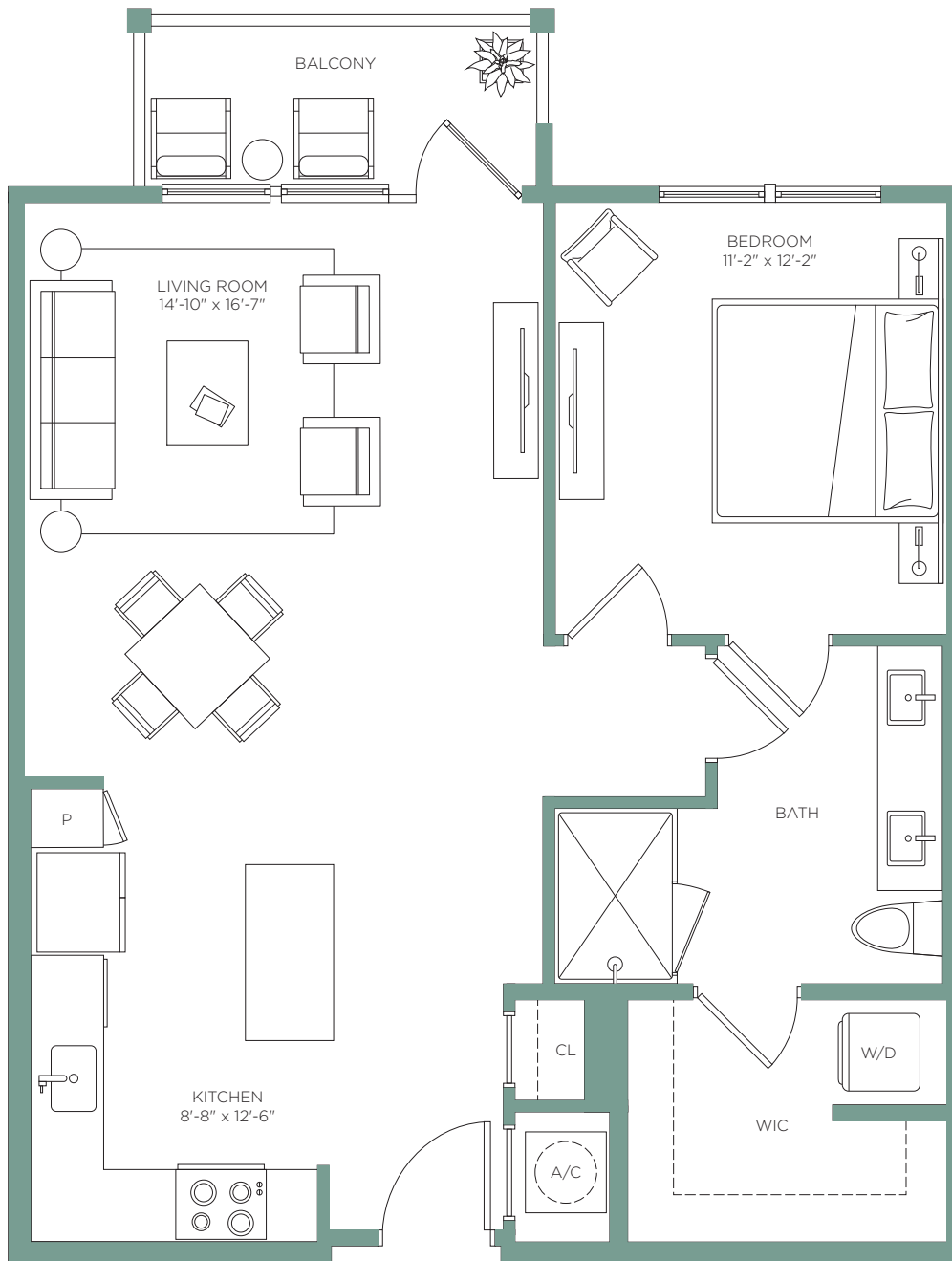
1 BED / 1 BATH

# T O W N

K E N N E S A W

INTERIOR 822 sf  
BALCONY 55 sf

TOTAL 877 sf



**LEASING OFFICE** - 1545 N Whitmarsh Rd, Kennesaw, GA 30152  
Call **770-230-1438** or visit **TownKennesawApts.com**

The developer is RD Town Kennesaw, LLC, which has a license to use the name and trademarks of The Related Group by license. The renderings, including floor plans, are intended to illustrate unit options and layouts in general and are not a representations of unit sizes and dimensions specifically.



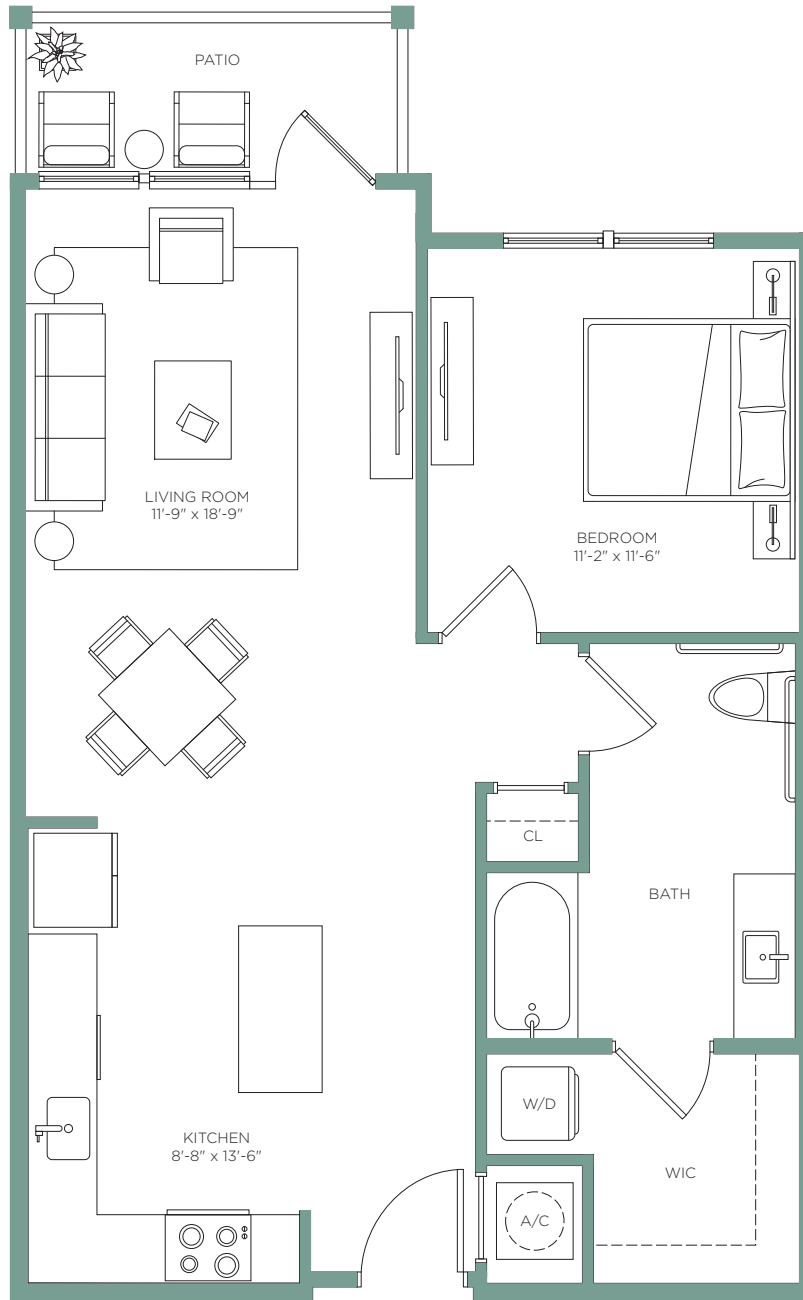
**A6A**

1 BED / 1 BATH

**T O W N**  
K E N N E S A W

INTERIOR 792 sf  
BALCONY 55 sf

TOTAL 847 sf



**LEASING OFFICE** - 1545 N Whitmarsh Rd, Kennesaw, GA 30152  
Call **770-230-1438** or visit **TownKennesawApts.com**

The developer is RD Town Kennesaw, LLC, which has a license to use the name and trademarks of The Related Group by license. The renderings, including floor plans, are intended to illustrate unit options and layouts in general and are not a representations of unit sizes and dimensions specifically.



**B1**

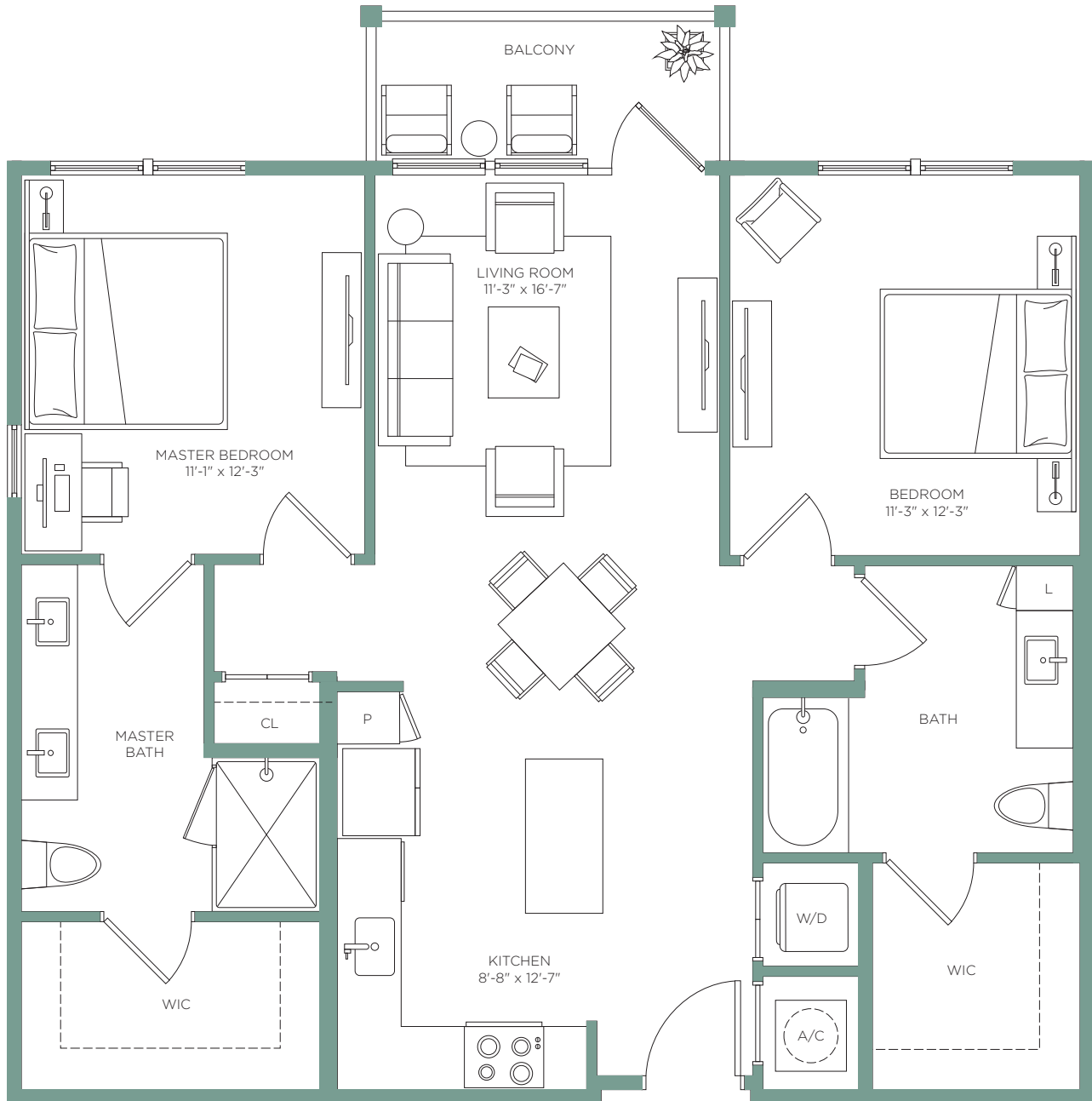
2 BED / 2 BATH

# T O W N

K E N N E S A W

INTERIOR 1,068 sf  
BALCONY 72 sf

TOTAL 1,140 sf



**LEASING OFFICE** - 1545 N Whitmarsh Rd, Kennesaw, GA 30152  
Call **770-230-1438** or visit **TownKennesawApts.com**

The developer is RD Town Kennesaw, LLC, which has a license to use the name and trademarks of The Related Group by license. The renderings, including floor plans, are intended to illustrate unit options and layouts in general and are not a representations of unit sizes and dimensions specifically.



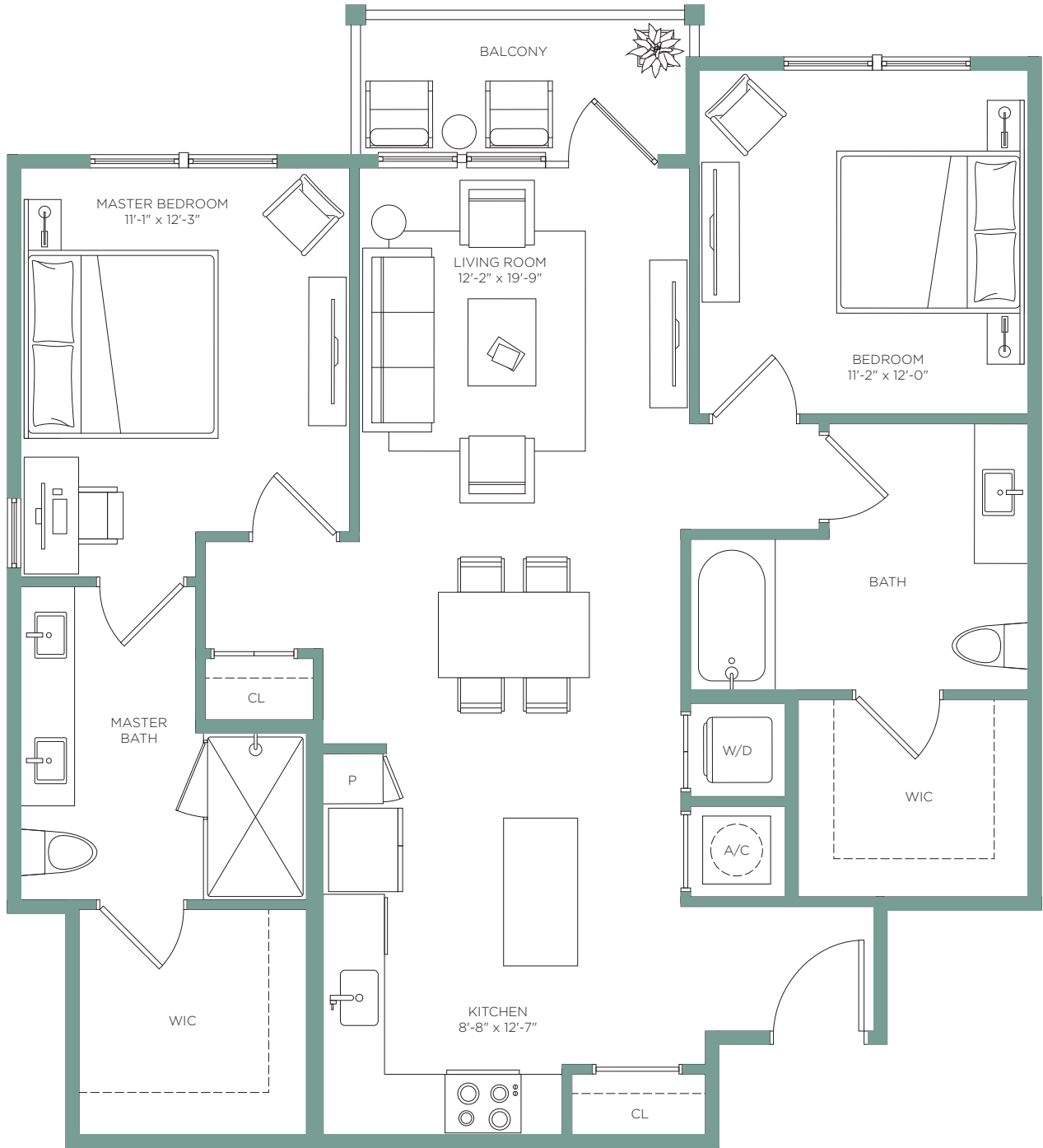
**B2**

2 BED / 2 BATH

**T O W N**  
K E N N E S A W

INTERIOR 1,156 sf  
BALCONY 72 sf

TOTAL 1,228 sf



**LEASING OFFICE** - 1545 N Whitmarsh Rd, Kennesaw, GA 30152  
Call **770-230-1438** or visit **TownKennesawApts.com**

The developer is RD Town Kennesaw, LLC, which has a license to use the name and trademarks of The Related Group by license. The renderings, including floor plans, are intended to illustrate unit options and layouts in general and are not a representations of unit sizes and dimensions specifically.





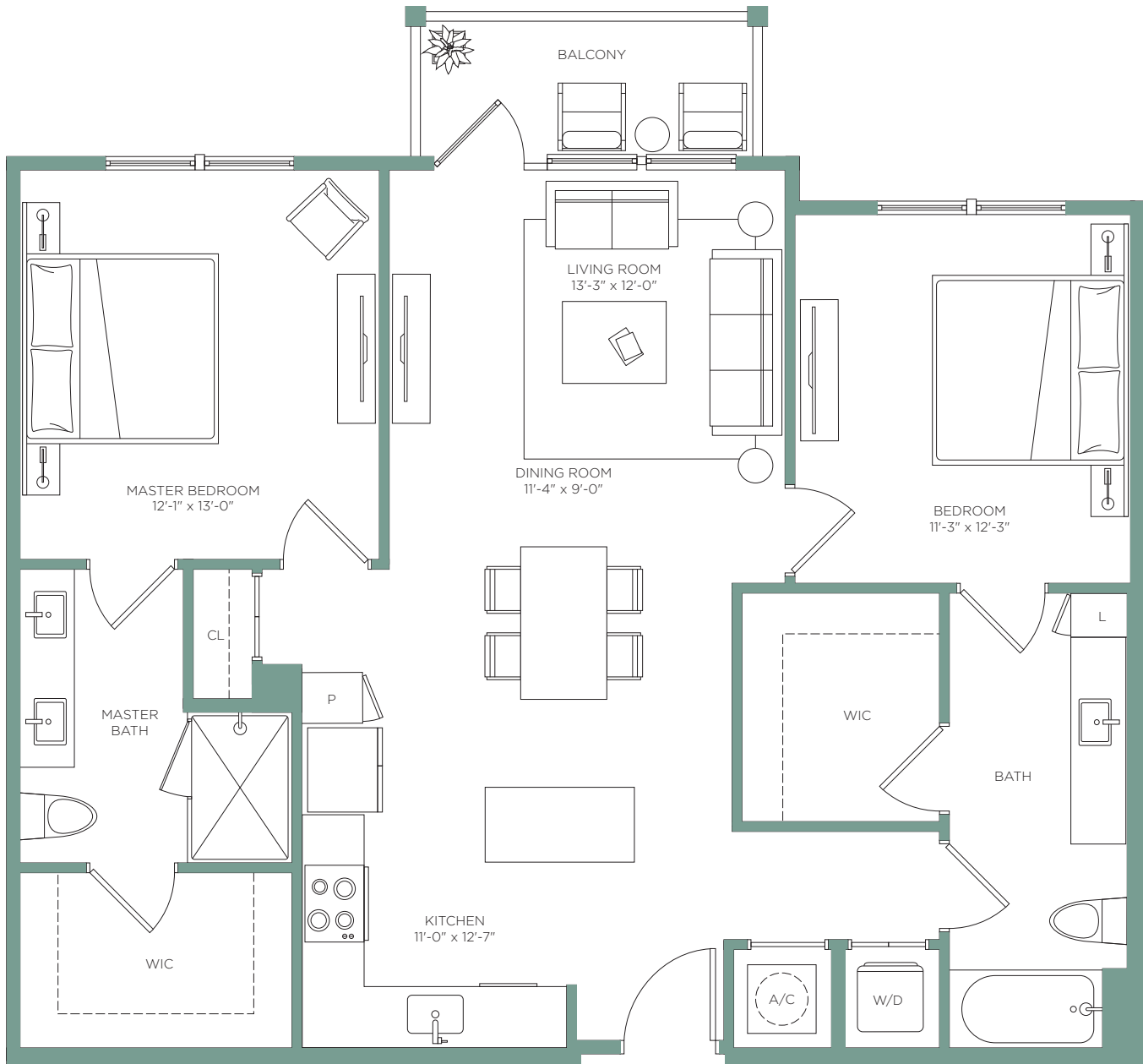
**B3**

2 BED / 2 BATH

**T O W N**  
K E N N E S A W

INTERIOR 1,201 sf  
BALCONY 72 sf

TOTAL 1,273 sf



**LEASING OFFICE** - 1545 N Whitmarsh Rd, Kennesaw, GA 30152  
Call **770-230-1438** or visit **TownKennesawApts.com**

The developer is RD Town Kennesaw, LLC, which has a license to use the name and trademarks of The Related Group by license. The renderings, including floor plans, are intended to illustrate unit options and layouts in general and are not a representations of unit sizes and dimensions specifically.



**B4**

2 BED / 2 BATH

**T O W N**  
K E N N E S A W

INTERIOR 1,215 sf  
BALCONY 72 sf

TOTAL 1,287 sf



**LEASING OFFICE** - 1545 N Whitmarsh Rd, Kennesaw, GA 30152  
Call **770-230-1438** or visit **TownKennesawApts.com**

The developer is RD Town Kennesaw, LLC, which has a license to use the name and trademarks of The Related Group by license. The renderings, including floor plans, are intended to illustrate unit options and layouts in general and are not a representations of unit sizes and dimensions specifically.



**B5**

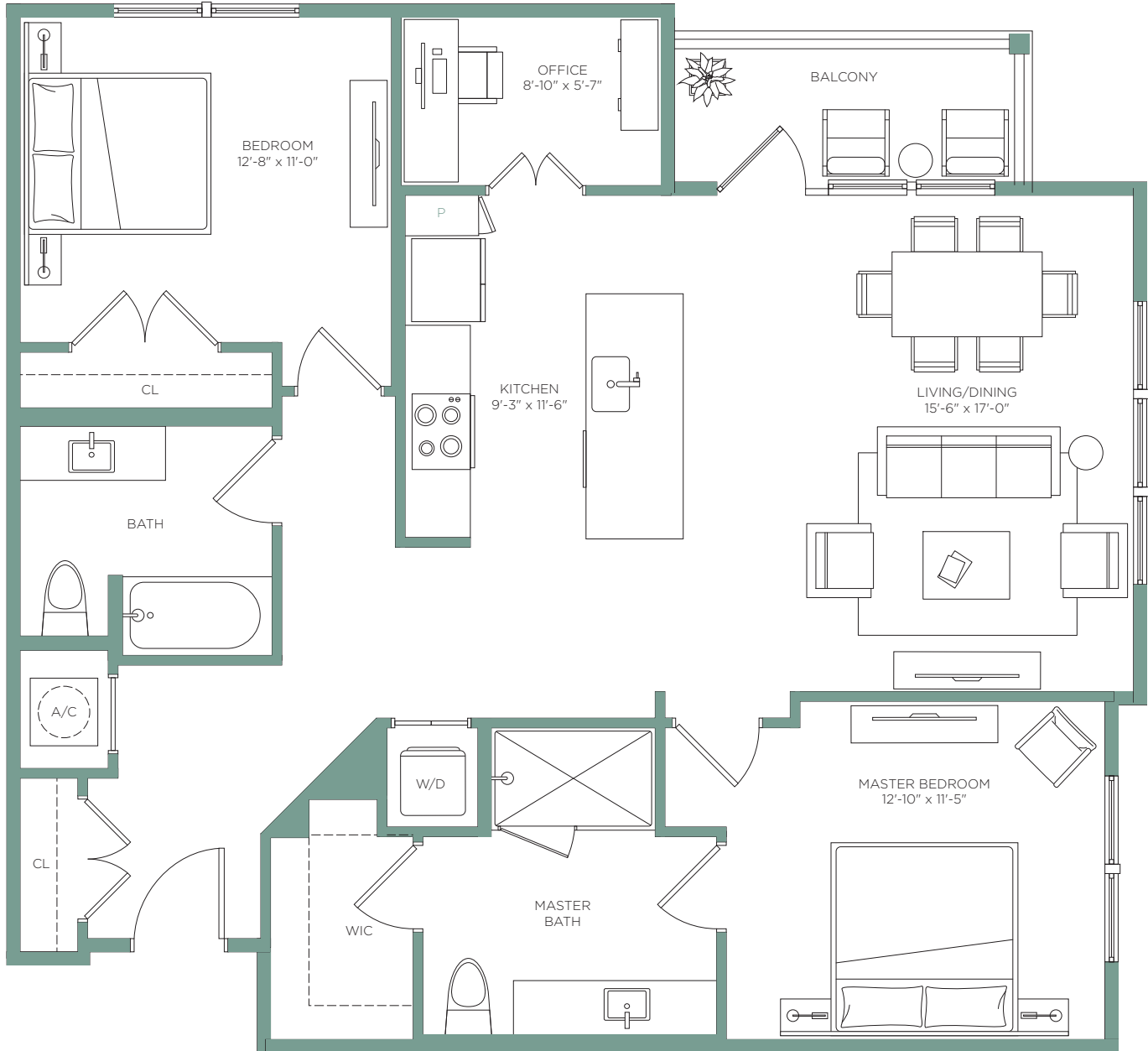
2 BED / 2 BATH

# T O W N

K E N N E S A W

INTERIOR 1,248 sf  
BALCONY 72 sf

TOTAL 1,320 sf



**LEASING OFFICE** - 1545 N Whitmarsh Rd, Kennesaw, GA 30152  
Call **770-230-1438** or visit **TownKennesawApts.com**

The developer is RD Town Kennesaw, LLC, which has a license to use the name and trademarks of The Related Group by license. The renderings, including floor plans, are intended to illustrate unit options and layouts in general and are not a representations of unit sizes and dimensions specifically.



# B6A

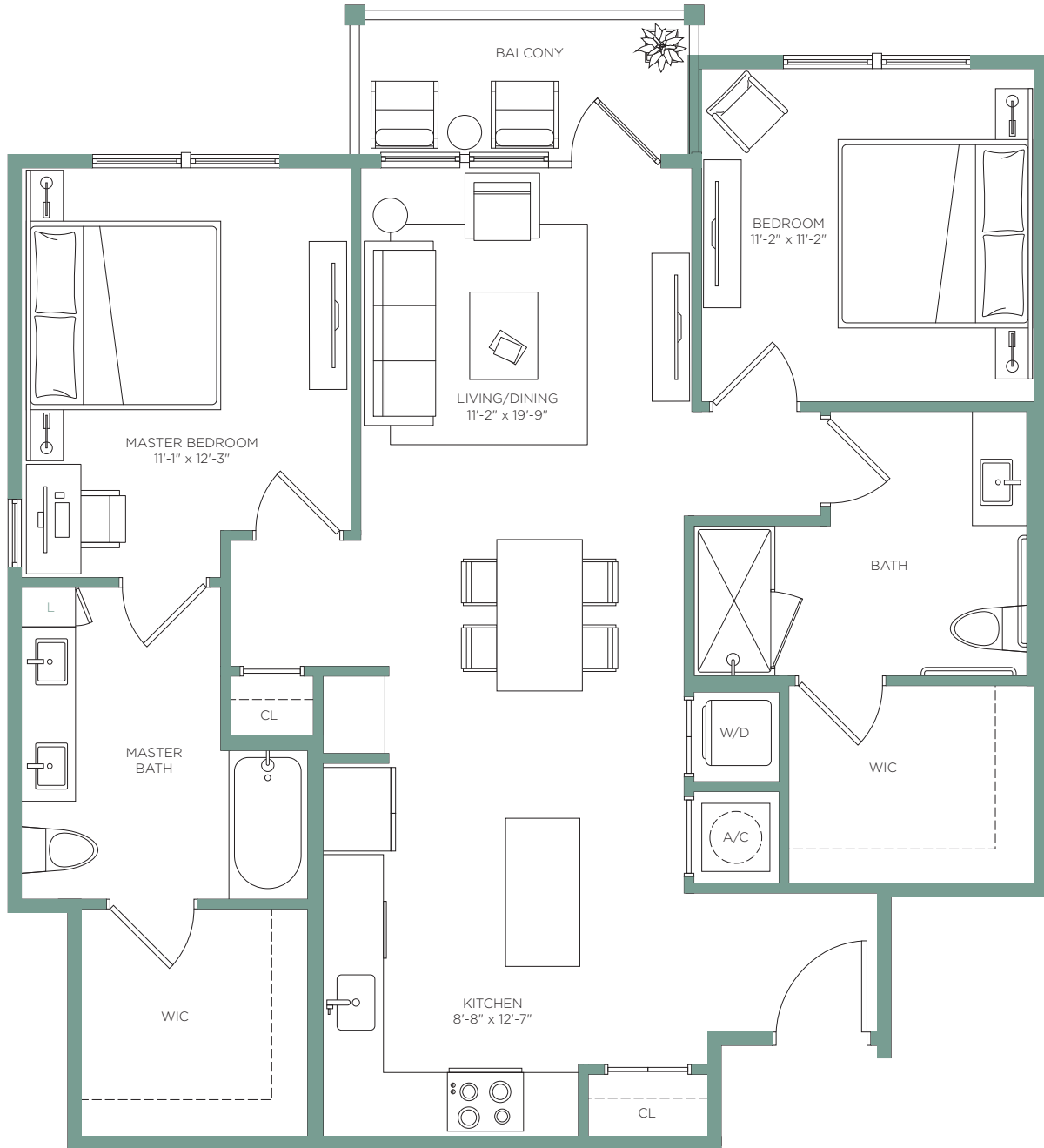
2 BED / 2 BATH

# T O W N

K E N N E S A W

INTERIOR 1,174 sf  
BALCONY 72 sf

TOTAL 1,246 sf



**LEASING OFFICE** - 1545 N Whitmarsh Rd, Kennesaw, GA 30152  
Call **770-230-1438** or visit **TownKennesawApts.com**

The developer is RD Town Kennesaw, LLC, which has a license to use the name and trademarks of The Related Group by license. The renderings, including floor plans, are intended to illustrate unit options and layouts in general and are not a representations of unit sizes and dimensions specifically.



C1

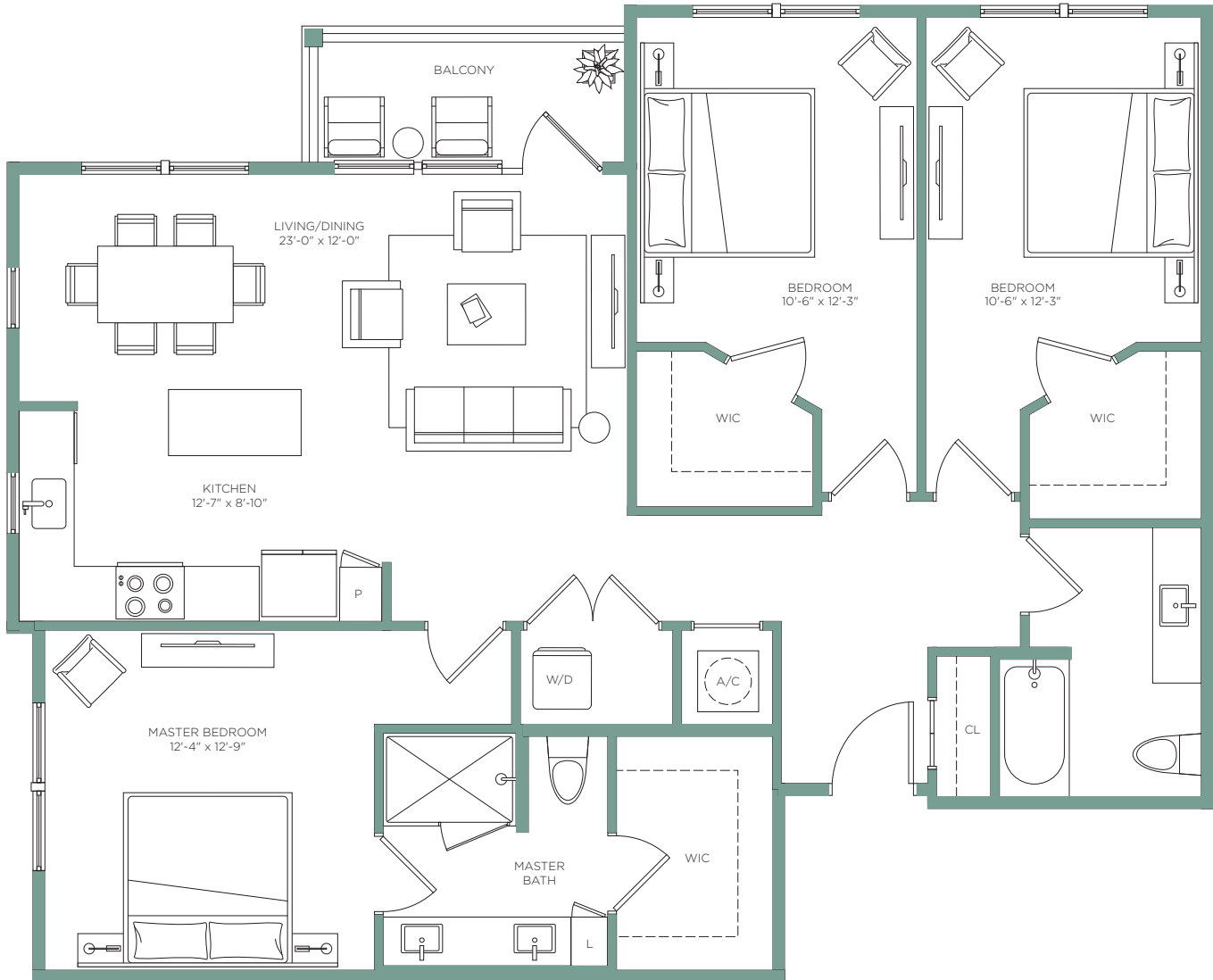
3 BED / 2 BATH

# T O W N

K E N N E S A W

INTERIOR 1,427 sf  
BALCONY 87 sf

TOTAL 1,514 sf



**LEASING OFFICE** - 1545 N Whitmarsh Rd, Kennesaw, GA 30152  
Call **770-230-1438** or visit **TownKennesawApts.com**

The developer is RD Town Kennesaw, LLC, which has a license to use the name and trademarks of The Related Group by license. The renderings, including floor plans, are intended to illustrate unit options and layouts in general and are not a representations of unit sizes and dimensions specifically.



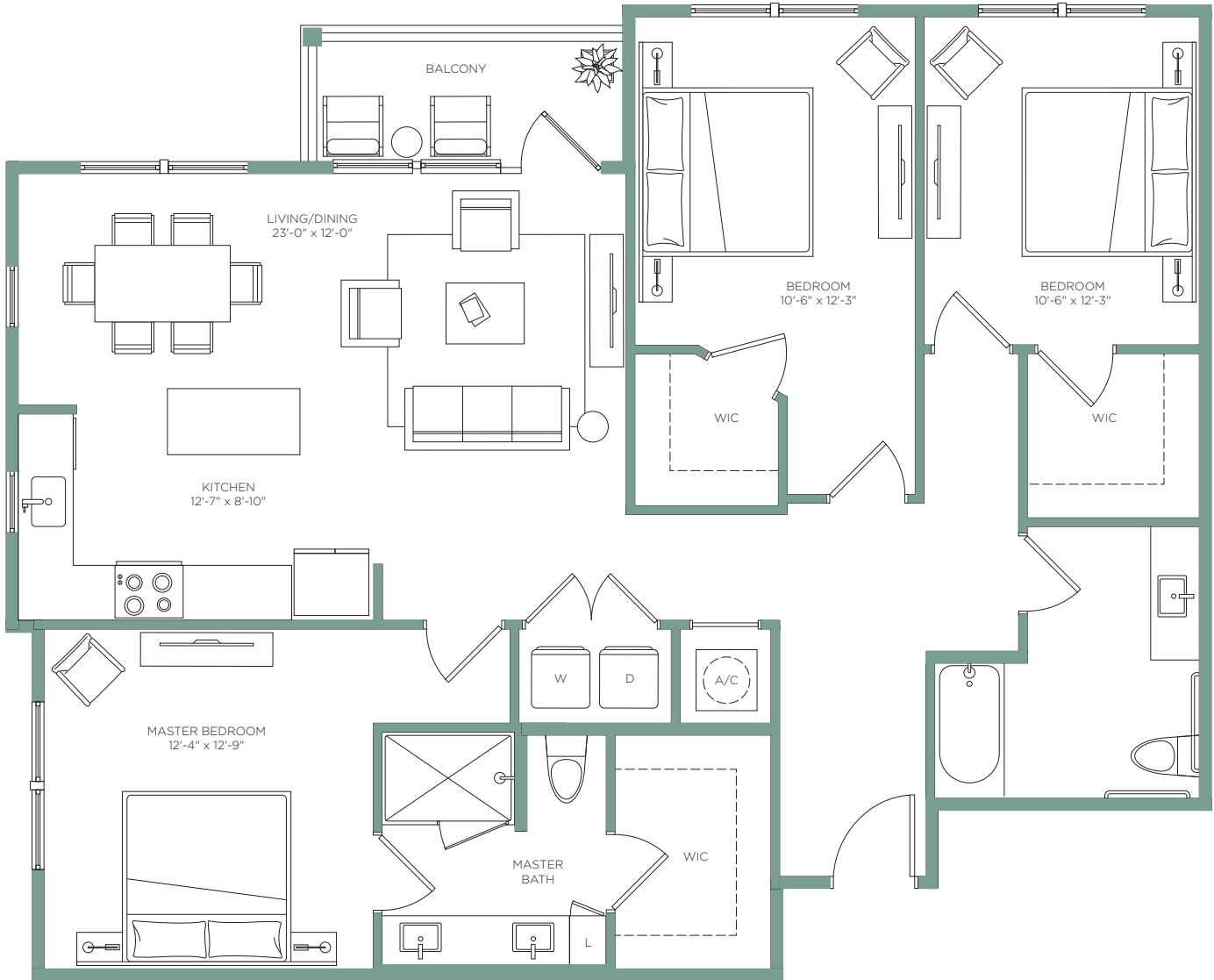
C2A

3 BED / 2 BATH

T O W N  
K E N N E S A W

INTERIOR 1,434 sf  
BALCONY 87 sf

TOTAL 1,521 sf



LEASING OFFICE - 1545 N Whitmarsh Rd, Kennesaw, GA 30152  
Call **770-230-1438** or visit **TownKennesawApts.com**

The developer is RD Town Kennesaw, LLC, which has a license to use the name and trademarks of The Related Group by license. The renderings, including floor plans, are intended to illustrate unit options and layouts in general and are not a representations of unit sizes and dimensions specifically.



# TOWNHOUSE B

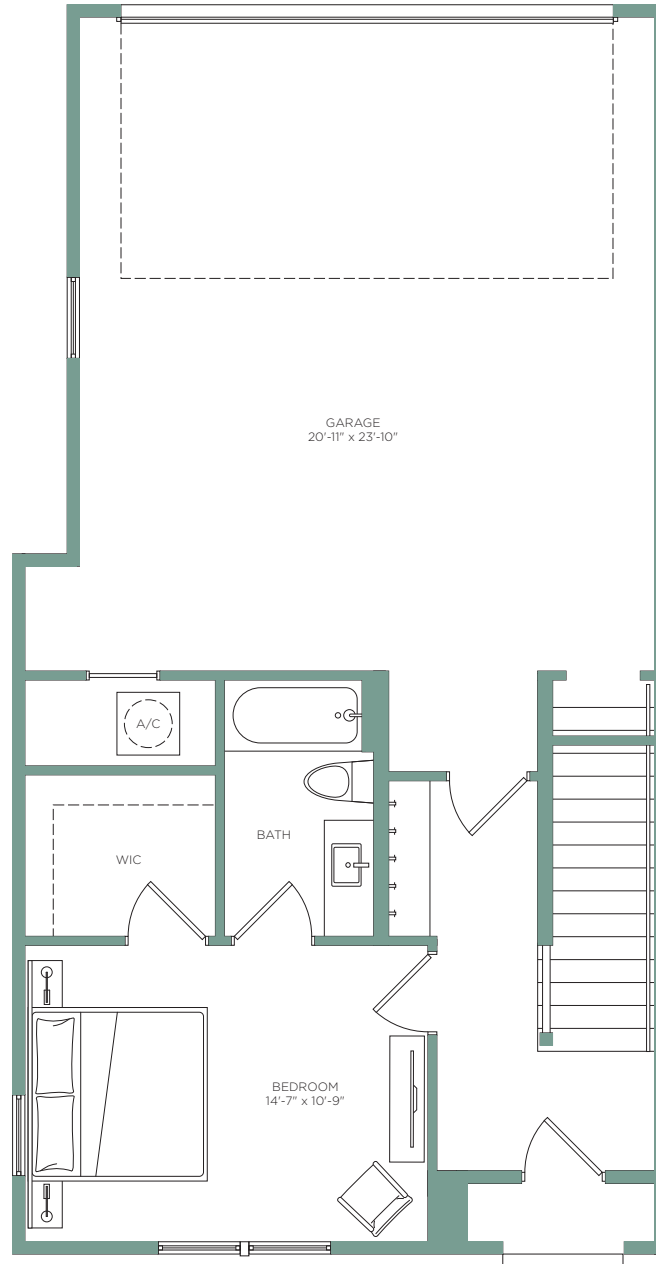
2 BED / 2.5 BATH

# T O W N K E N N E S A W

INTERIOR 1,908 sf  
BALCONY 324 sf

TOTAL 2,232 sf

## GROUND FLOOR



**LEASING OFFICE** - 1545 N Whitmarsh Rd, Kennesaw, GA 30152  
Call **770-230-1438** or visit **TownKennesawApts.com**

The developer is RD Town Kennesaw, LLC, which has a license to use the name and trademarks of The Related Group by license. The renderings, including floor plans, are intended to illustrate unit options and layouts in general and are not a representations of unit sizes and dimensions specifically.



# TOWNHOUSE B

2 BED / 2.5 BATH

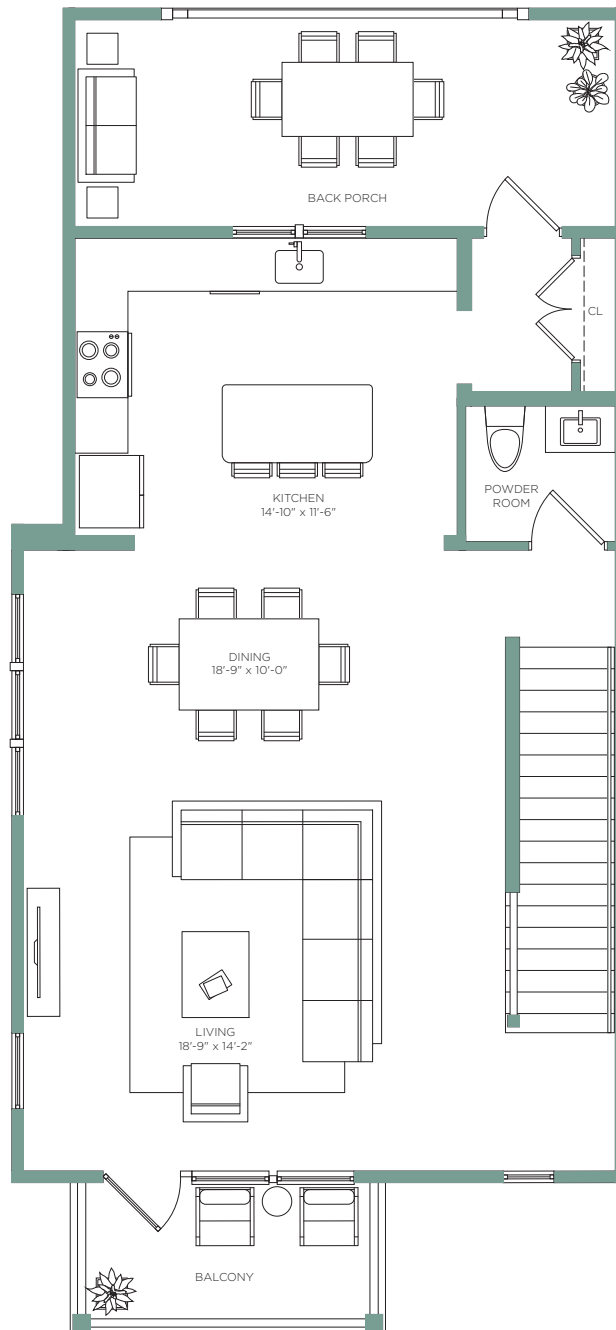
# T O W N

K E N N E S A W

INTERIOR 1,908 sf  
BALCONY 324 sf

TOTAL 2,232 sf

## SECOND FLOOR



**LEASING OFFICE** - 1545 N Whitmarsh Rd, Kennesaw, GA 30152  
Call **770-230-1438** or visit **TownKennesawApts.com**

The developer is RD Town Kennesaw, LLC, which has a license to use the name and trademarks of The Related Group by license. The renderings, including floor plans, are intended to illustrate unit options and layouts in general and are not a representations of unit sizes and dimensions specifically.





# TOWNHOUSE B

2 BED / 2.5 BATH

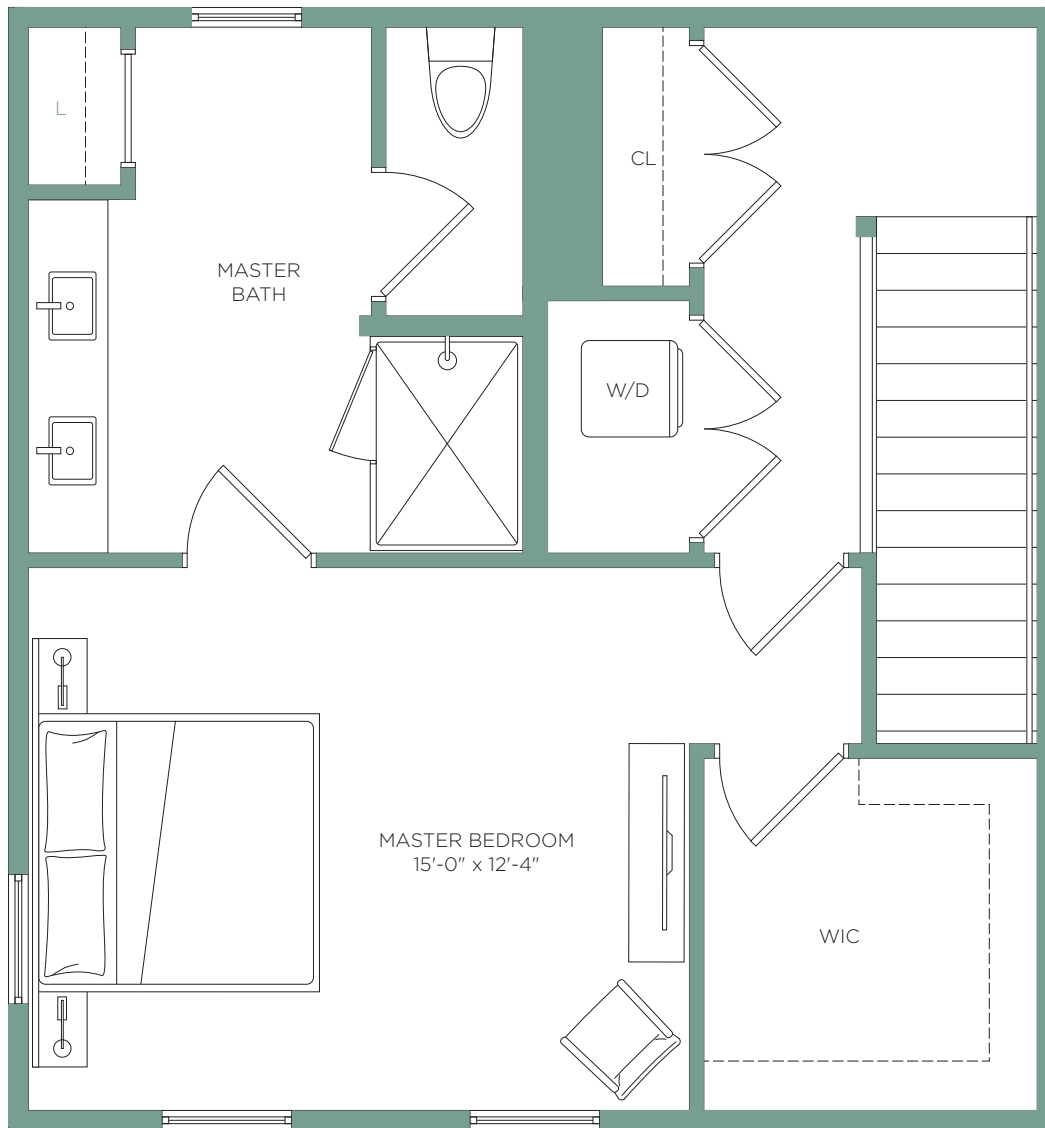
# T O W N

K E N N E S A W

INTERIOR 1,908 sf  
BALCONY 324 sf

TOTAL 2,232 sf

## THIRD FLOOR



**LEASING OFFICE** - 1545 N Whitmarsh Rd, Kennesaw, GA 30152  
Call **770-230-1438** or visit **TownKennesawApts.com**

The developer is RD Town Kennesaw, LLC, which has a license to use the name and trademarks of The Related Group by license. The renderings, including floor plans, are intended to illustrate unit options and layouts in general and are not a representations of unit sizes and dimensions specifically.



# TOWNHOUSE C

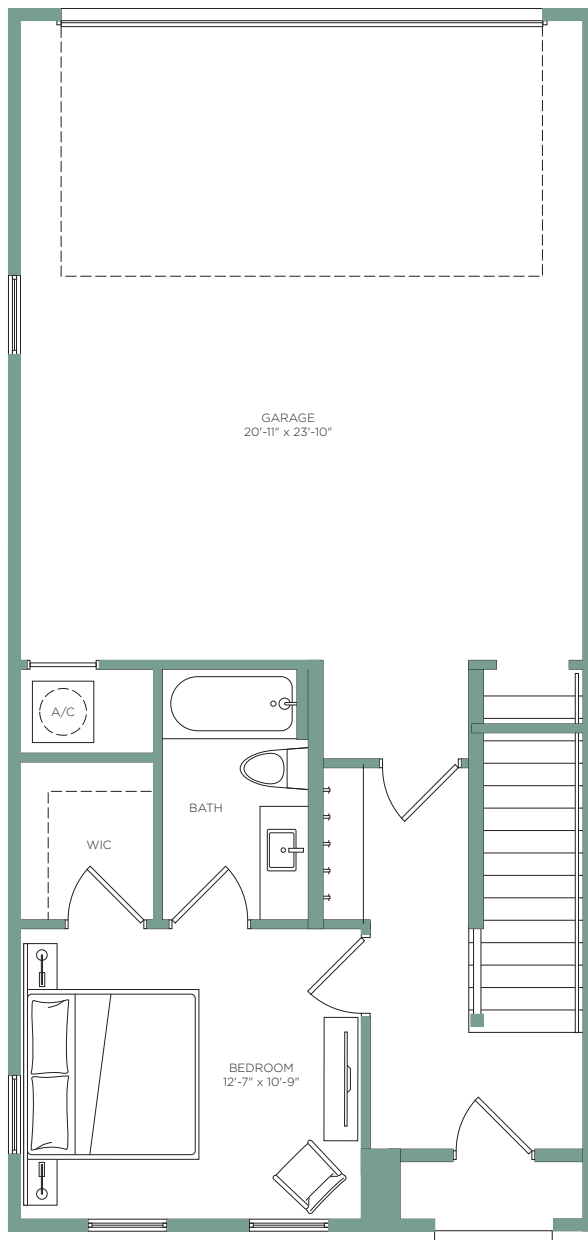
3 BED / 3.5 BATH

T O W N  
K E N N E S A W

INTERIOR 2,017 sf  
BALCONY 252 sf

TOTAL 2,269 sf

## GROUND FLOOR



**LEASING OFFICE** - 1545 N Whitmarsh Rd, Kennesaw, GA 30152  
Call **770-230-1438** or visit **TownKennesawApts.com**

The developer is RD Town Kennesaw, LLC, which has a license to use the name and trademarks of The Related Group by license. The renderings, including floor plans, are intended to illustrate unit options and layouts in general and are not a representations of unit sizes and dimensions specifically.



# TOWNHOUSE C

3 BED / 3.5 BATH

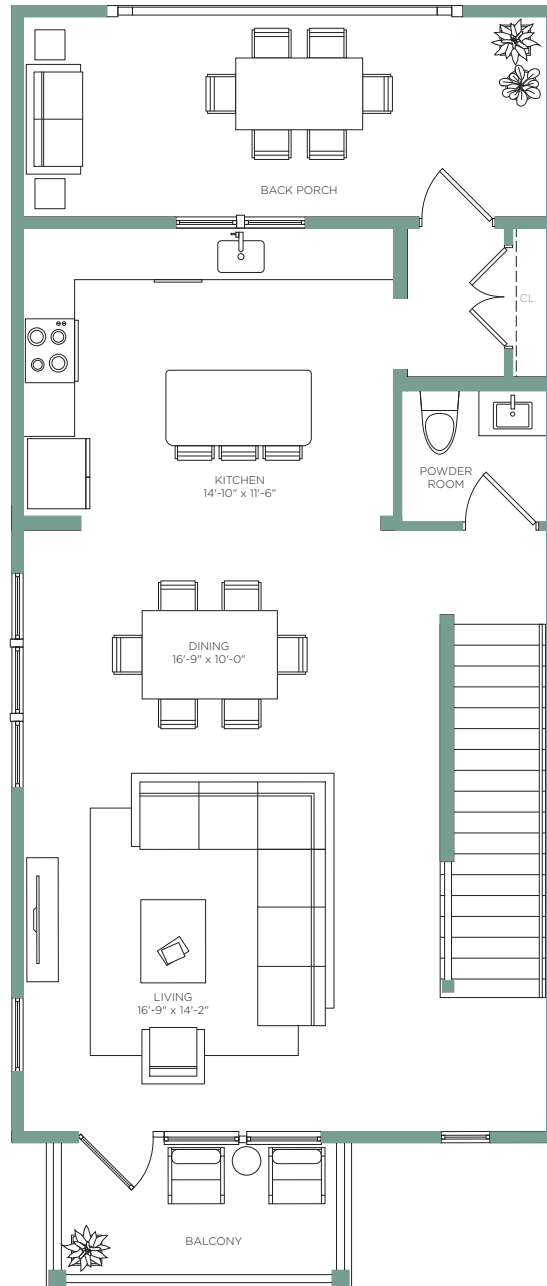
# T O W N

K E N N E S A W

INTERIOR 2,017 sf  
BALCONY 252 sf

TOTAL 2,269 sf

## SECOND FLOOR



**LEASING OFFICE** - 1545 N Whitmarsh Rd, Kennesaw, GA 30152  
Call **770-230-1438** or visit **TownKennesawApts.com**

The developer is RD Town Kennesaw, LLC, which has a license to use the name and trademarks of The Related Group by license. The renderings, including floor plans, are intended to illustrate unit options and layouts in general and are not a representations of unit sizes and dimensions specifically.



# TOWNHOUSE C

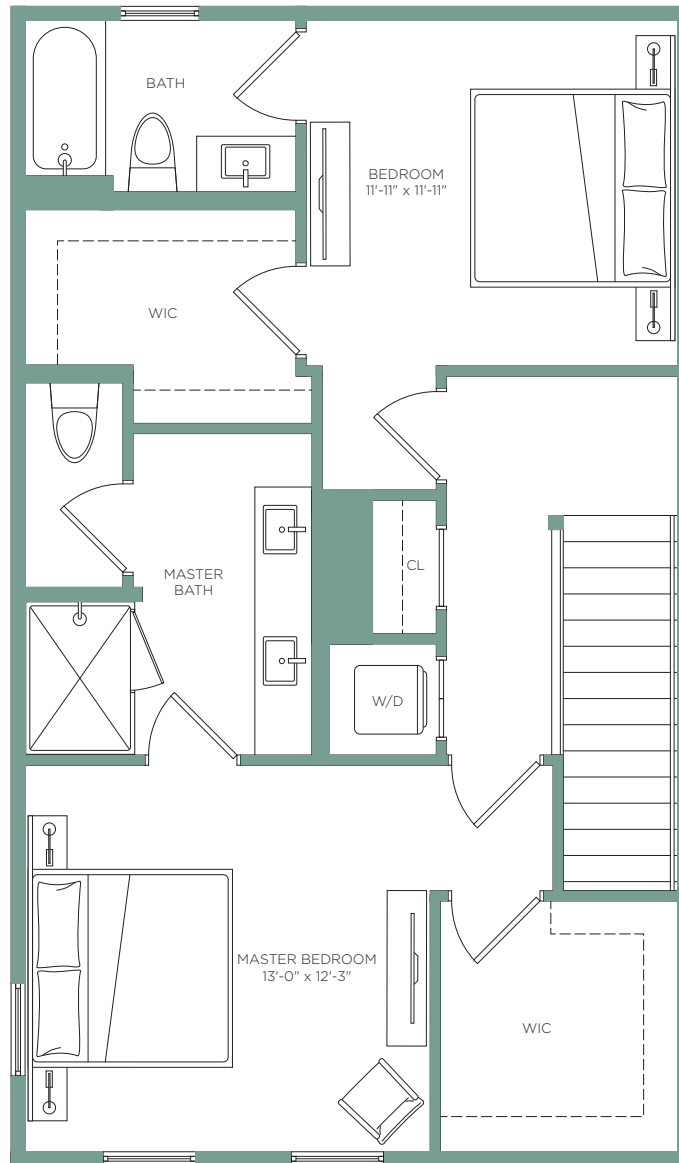
3 BED / 3.5 BATH

# T O W N K E N N E S A W

INTERIOR 2,017 sf  
BALCONY 252 sf

TOTAL 2,269 sf

## THIRD FLOOR



**LEASING OFFICE** - 1545 N Whitmarsh Rd, Kennesaw, GA 30152  
Call **770-230-1438** or visit **TownKennesawApts.com**

The developer is RD Town Kennesaw, LLC, which has a license to use the name and trademarks of The Related Group by license. The renderings, including floor plans, are intended to illustrate unit options and layouts in general and are not a representations of unit sizes and dimensions specifically.

