

TOWNHOUSE B

2 BED / 2.5 BATH

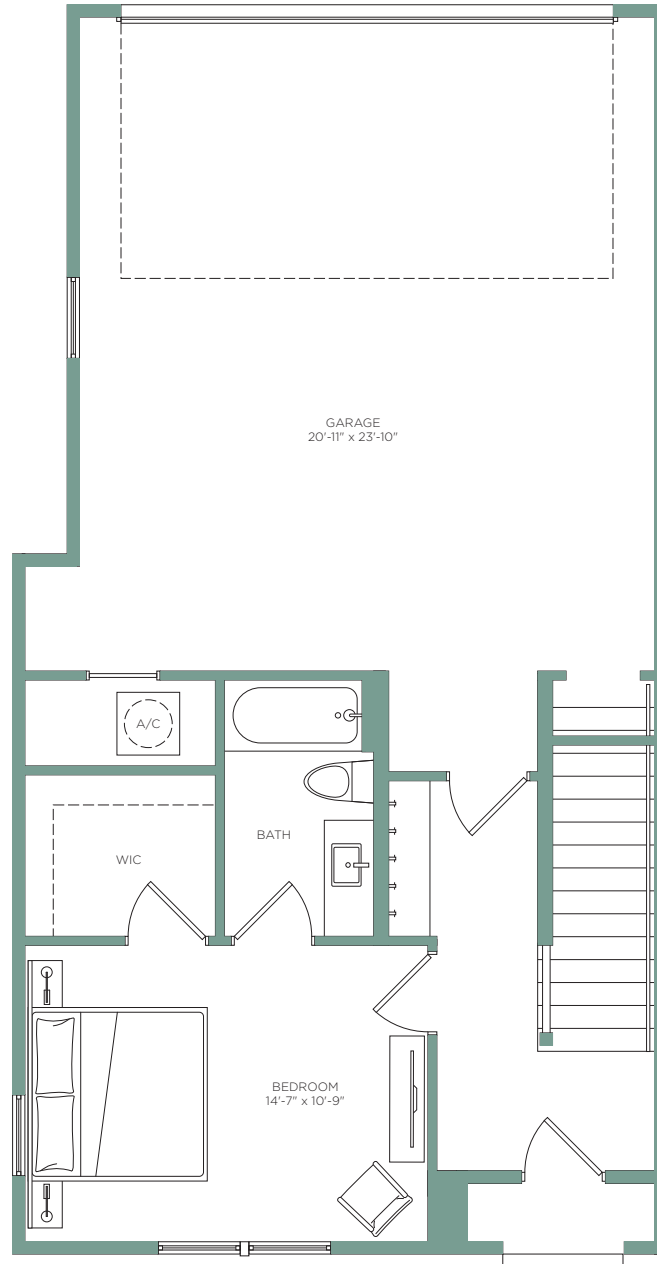
T O W N

K E N N E S A W

INTERIOR 1,908 sf
BALCONY 324 sf

TOTAL 2,232 sf

GROUND FLOOR



LEASING OFFICE - 1545 N Whitmarsh Rd, Kennesaw, GA 30152
Call **770-230-1438** or visit **TownKennesawApts.com**

The developer is RD Town Kennesaw, LLC, which has a license to use the name and trademarks of The Related Group by license. The renderings, including floor plans, are intended to illustrate unit options and layouts in general and are not a representations of unit sizes and dimensions specifically.



TOWNHOUSE B

2 BED / 2.5 BATH

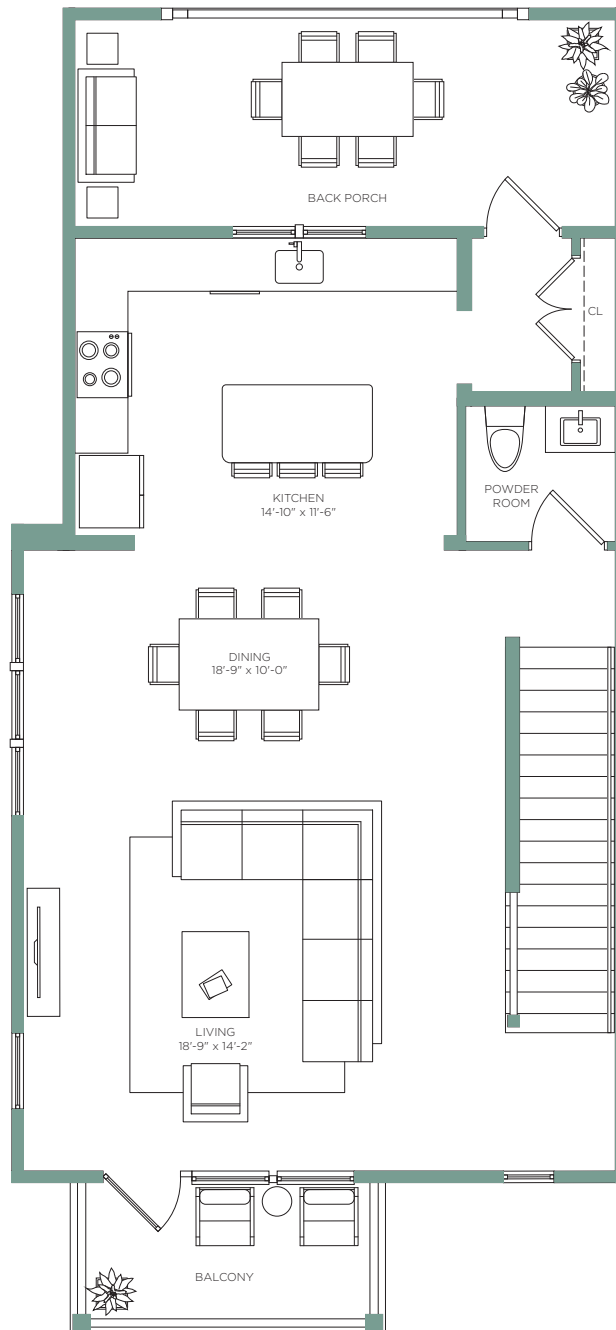
T O W N

K E N N E S A W

INTERIOR 1,908 sf
BALCONY 324 sf

TOTAL 2,232 sf

SECOND FLOOR



LEASING OFFICE - 1545 N Whitmarsh Rd, Kennesaw, GA 30152
Call **770-230-1438** or visit **TownKennesawApts.com**

The developer is RD Town Kennesaw, LLC, which has a license to use the name and trademarks of The Related Group by license. The renderings, including floor plans, are intended to illustrate unit options and layouts in general and are not a representations of unit sizes and dimensions specifically.



TOWNHOUSE B

2 BED / 2.5 BATH

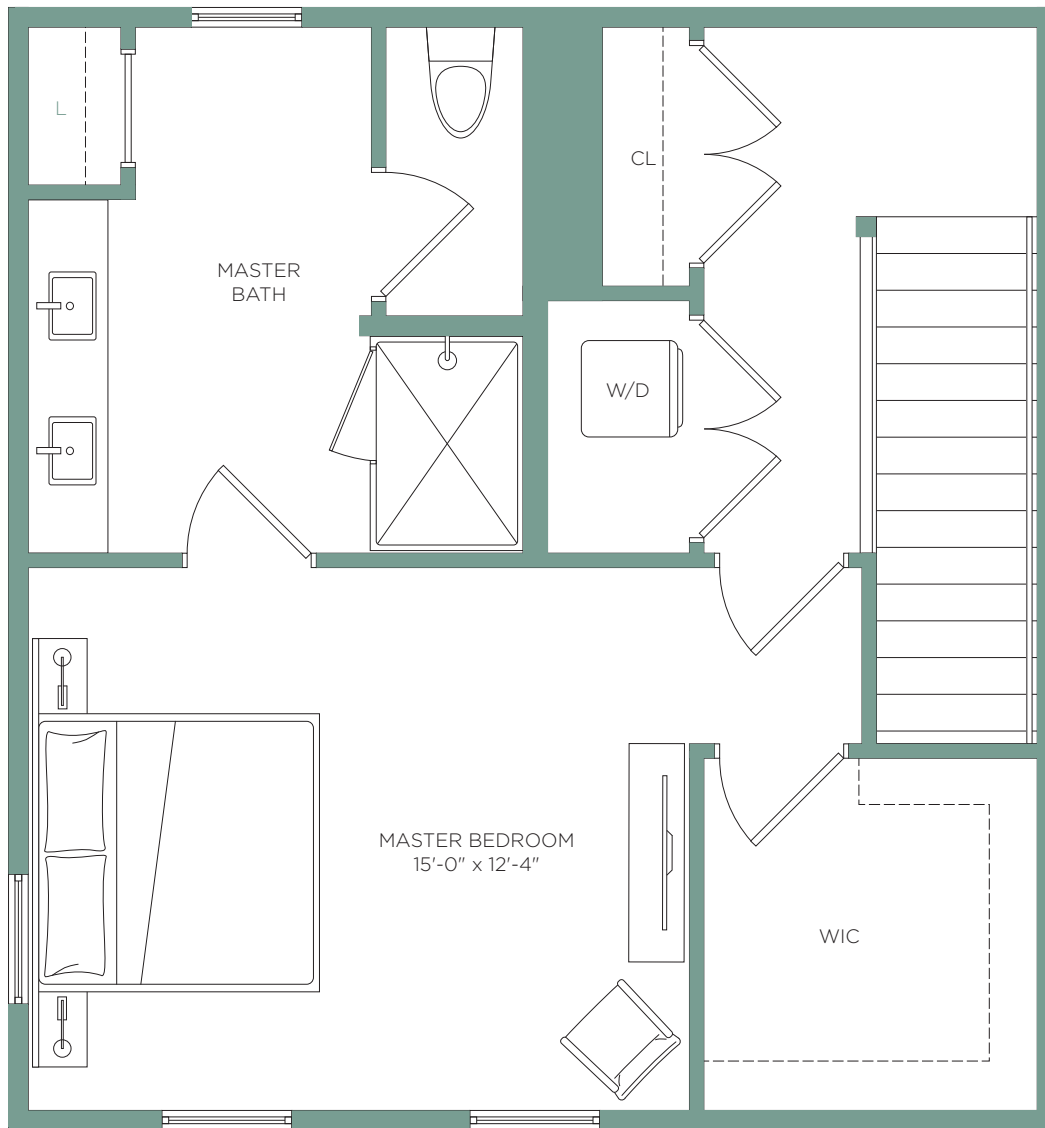
T O W N

K E N N E S A W

INTERIOR 1,908 sf
BALCONY 324 sf

TOTAL 2,232 sf

THIRD FLOOR



LEASING OFFICE - 1545 N Whitmarsh Rd, Kennesaw, GA 30152
Call **770-230-1438** or visit **TownKennesawApts.com**

The developer is RD Town Kennesaw, LLC, which has a license to use the name and trademarks of The Related Group by license. The renderings, including floor plans, are intended to illustrate unit options and layouts in general and are not a representations of unit sizes and dimensions specifically.

