

# TOWNHOUSE C

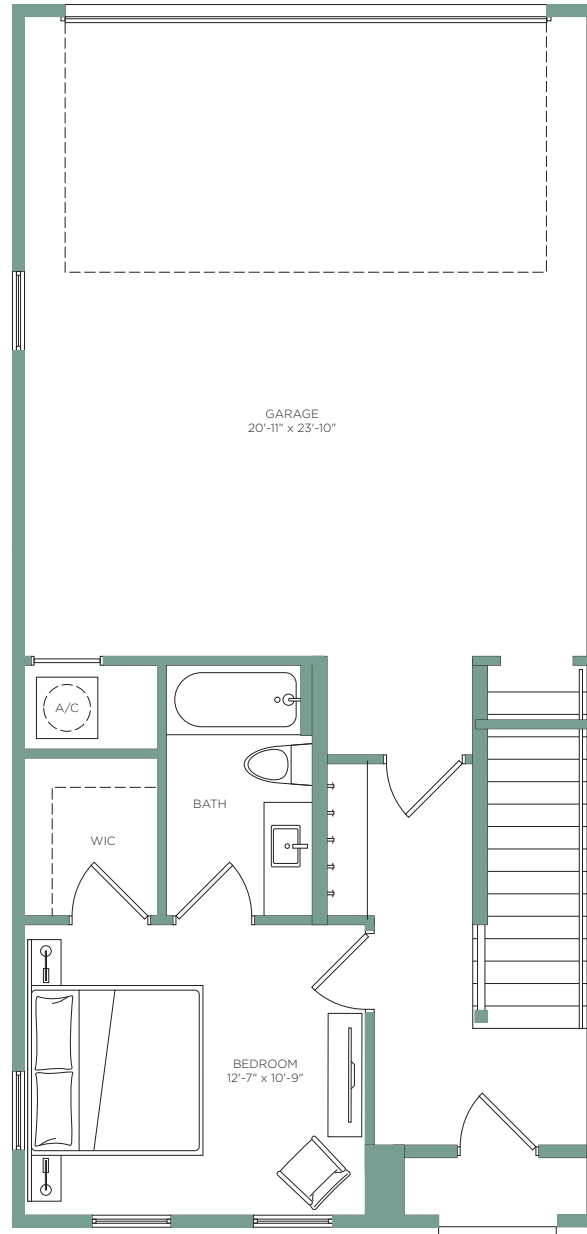
3 BED / 3.5 BATH

T O W N  
K E N N E S A W

INTERIOR 2,017 sf  
BALCONY 252 sf

TOTAL 2,269 sf

## GROUND FLOOR



**LEASING OFFICE** - 1545 N Whitmarsh Rd, Kennesaw, GA 30152  
Call **770-230-1438** or visit **TownKennesawApts.com**

The developer is RD Town Kennesaw, LLC, which has a license to use the name and trademarks of The Related Group by license. The renderings, including floor plans, are intended to illustrate unit options and layouts in general and are not a representations of unit sizes and dimensions specifically.



# TOWNHOUSE C

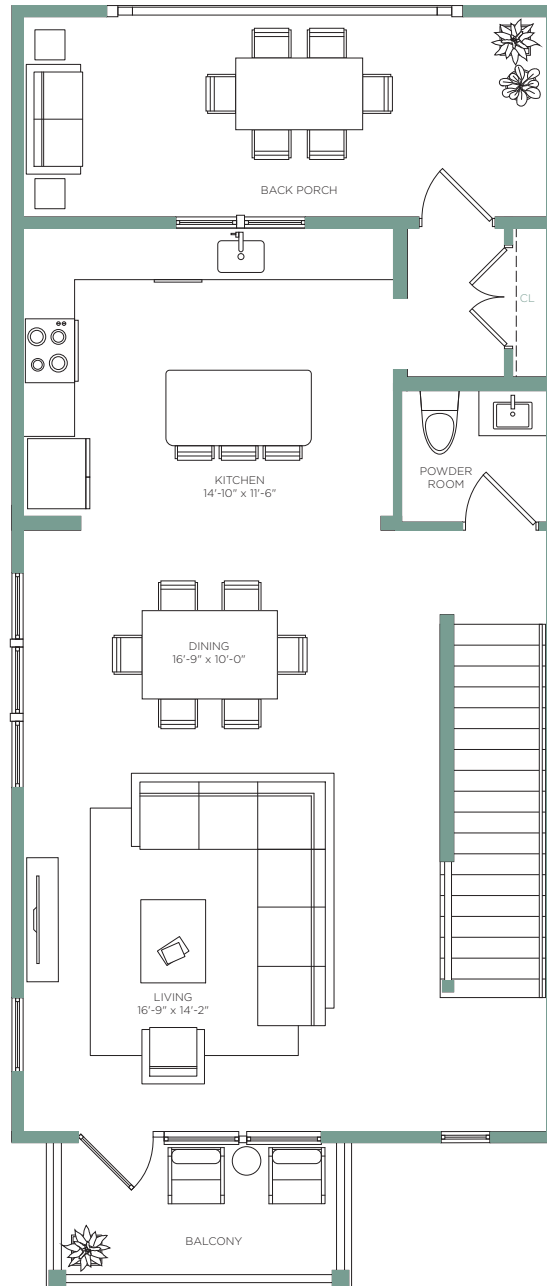
3 BED / 3.5 BATH

# T O W N K E N N E S A W

INTERIOR 2,017 sf  
BALCONY 252 sf

TOTAL 2,269 sf

## SECOND FLOOR



LEASING OFFICE - 1545 N Whitmarsh Rd, Kennesaw, GA 30152  
Call **770-230-1438** or visit **TownKennesawApts.com**

The developer is RD Town Kennesaw, LLC, which has a license to use the name and trademarks of The Related Group by license. The renderings, including floor plans, are intended to illustrate unit options and layouts in general and are not a representations of unit sizes and dimensions specifically.



# TOWNHOUSE C

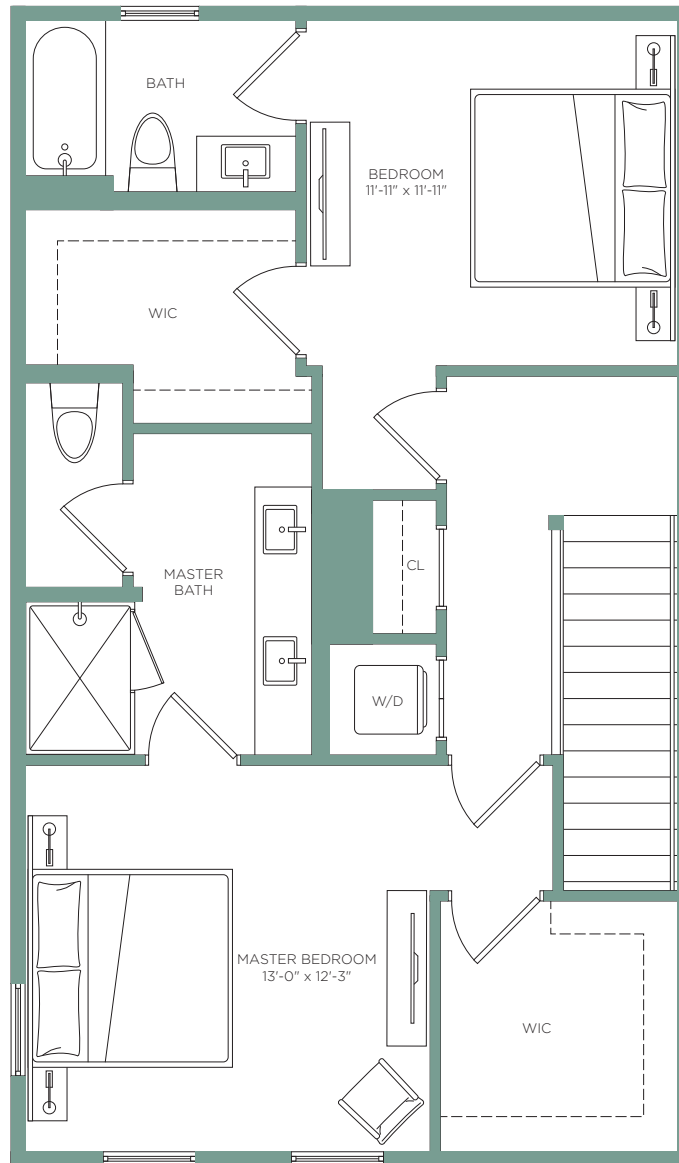
3 BED / 3.5 BATH

# T O W N K E N N E S A W

INTERIOR 2,017 sf  
BALCONY 252 sf

TOTAL 2,269 sf

## THIRD FLOOR



**LEASING OFFICE** - 1545 N Whitmarsh Rd, Kennesaw, GA 30152  
Call **770-230-1438** or visit **TownKennesawApts.com**

The developer is RD Town Kennesaw, LLC, which has a license to use the name and trademarks of The Related Group by license. The renderings, including floor plans, are intended to illustrate unit options and layouts in general and are not a representations of unit sizes and dimensions specifically.

